

T9

Quick Start Guide

2CH FHD Dash Cam with Wi-Fi



Precautions before using the product

This product is a safety aid that records the driving images of the vehicle and should only be used as a reference for viewing the driving images.

This product does not guarantee that all accident images are recorded. If the memory card has expired, or if the impact is subtle and undetectable, it may not be recorded.

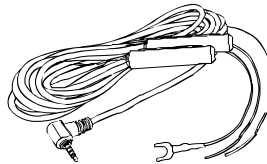
Manufacturer is not responsible for and does not provide support for damages caused by accidents and data loss.

Operation during operation is at risk of accidents, so please stop before using it.

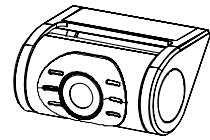
Package Contents



Main unit



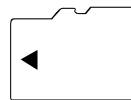
Hardwire Cable



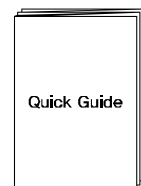
Rear Camera



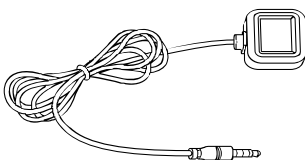
Rear Camera Cable



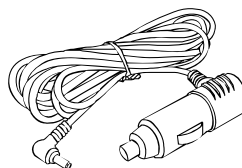
Micro SD Card



Quick Start Guide



GPS Module
(Optional)



Cigar Cable
(Optional)

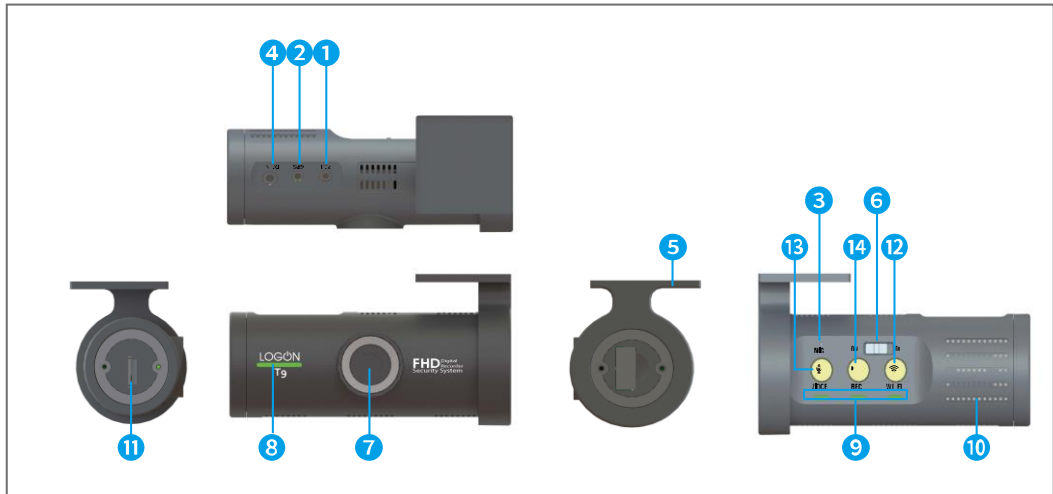
Product Overview

T9 dual channel system puts out FHD video for both front and rear units.

The main function of T9 is to use a smartphone to review dash cam footage, this feature accomplishes several tasks that are nice to have on a high-end dash cam.

First it eliminates the need for a built-in screen in the sense that you can still easily access videos while retaining a very discreet form factor.

With this function, in the event of an accident, the user could quickly show the footage to law enforcement via SNS sharing menu that T9 has may can help describe what happened without the need for a laptop or even removing the Micro SD card.



Mark	Description
① 2CH	Rear camera port
② GPS	GPS module port
③ MIC	Microphone for voice and audio recording
④ DC-IN	Power cable port
⑤ Mount	Installation Mount
⑥ Power	Power ON/OFF switch
⑦ Camera Lens	Front camera for video recording
⑧ Front LED	Indicates parking status and provides security effect
⑨ Status LED	Notification for recording
⑩ Speaker	Voice guidance
⑪ Micro SD	Memory card slot
⑫ Wi-Fi Button	Wi-Fi ON/OFF button
⑬ Speaker / Voice Recording Button	Press more than 3 seconds : Speaker ON/OFF Press less than 3 seconds : Voice recording ON/OFF
⑭ Manual Recording Button	Manual record

Device Installation

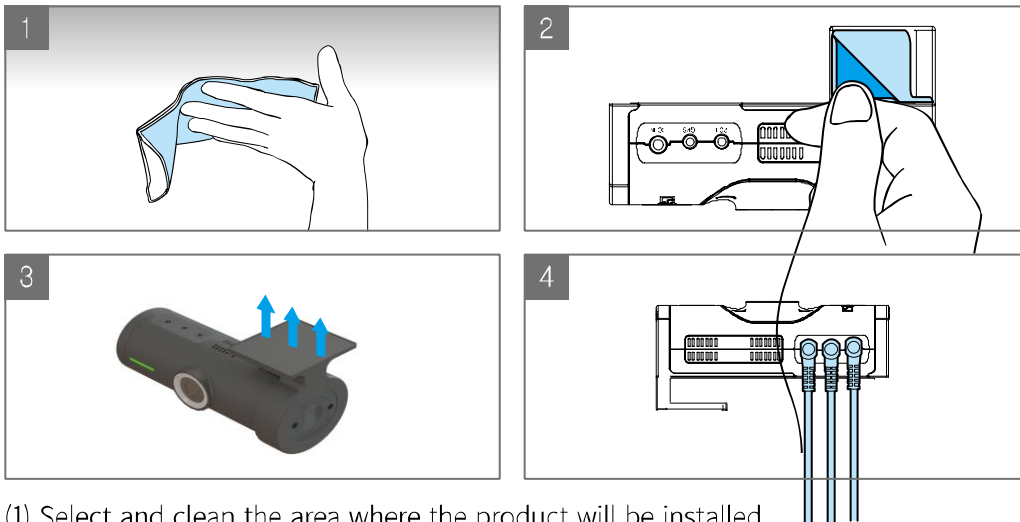
Caution

- Make sure to install the device in a safe area and that the engine is OFF.
- Please check if the Micro SD card is inserted correctly before connecting to power.
- Make sure the installation area is clean.
- Disconnect the power cable if you are not using the device for a long period of time
- Do not drop the product as it may not function properly.
- During extreme high temperatures or hot weathers, parking indoors is suggested.

Caution when inserting Micro SD card

- Do not apply excessive force on the Micro SD card or insert in the wrong direction. Any actions which may cause an SD card error, will be the responsibility of the user.
- Please test the Micro SD card for errors frequently and because it is a consumable item, it should be replaced periodically.
- Make sure the device is turned off when you pull out the SD Card.
- Any issues arisen by using different Micro SD Card besides T9s are the responsibilities of the user.
- Store important recordings into other devices (ex, PC).

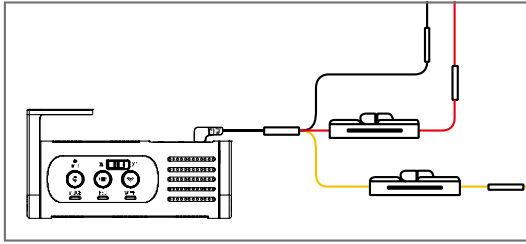
1. Main device installation



- (1) Select and clean the area where the product will be installed.
- (2) Remove the double sided tape.
- (3) Attach the device.
- (4) Connect the rear camera and GPS cables first, then connect the power cable.

⚠ To avoid interrupted reception with other devices such as a navigation, make sure the wiring is not overlapped with enough space in between.

2. Connecting Hardwire Cable



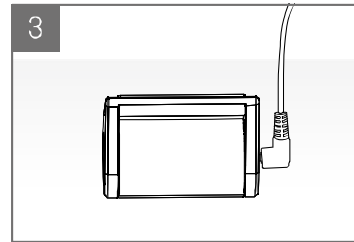
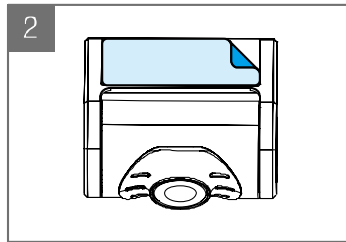
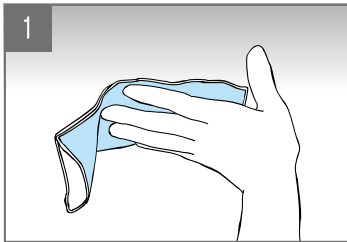
BLACK : GND

YELLOW : BAT (B+)

RED : ACC

⚠ Please visit a professional installer to connect hardwire cable.

3. Rear Camera Installation



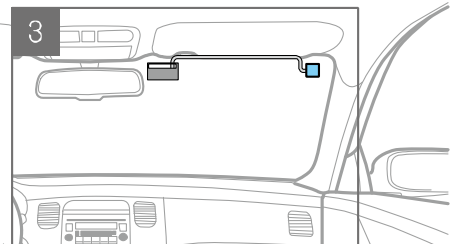
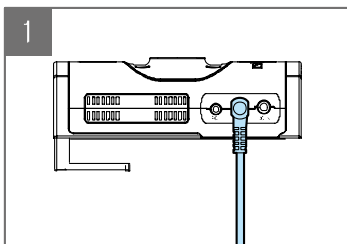
- (1) Select and clean the area where the product will be installed.
- (2) Remove the double sided tape and attach the device.
- (3) Connect the rear camera and the cable.

⚠ Before installation, make sure the engine is turned off.

⚠ Make sure the installation area is cleaned.

⚠ Make sure the installation area doesn't interfere with the window's infrared rays.

4. External GPS Module Installation



- (1) Connect the external GPS module to the right connector in the device.
- (2) Organize the cable lines across the car's ceiling.
- (3) Remove the double sided tape and attach the module to the car's windshield.

⚠ Before installation, make sure the engine is turned off.

⚠ Make sure the installation area is cleaned.

Product Spec

Product Specifications

Item	Description
Video Resolution	Front / Rear : FHD 1920 X 1080 @ 30fps
Image Sensor	Front : 1/2.8" 2M SONY STARVIS / Rear : 1/2.9" 2M SONY EXMOR
Video Codec	H.264 High Profile
Dimensions	Front : 103mm X 40.5mm X 55mm / Rear : 65mm X 30mm X 28mm
Applicable Capa.	Micro SDHC (16GB / 32GB / 64GB / 128GB / 256GB)
Recording Mode	Normal / Event / Manual / Parking (Motion & Impact detection)
Viewing Angle	Front : 115°(H) X 62°(V) X 145°(D) / Rear : 110°(H) X 60°(V) X 140°(D)
LCD	No screen
GPS	External & Optional
Micro Phone	Built-in
Speaker	Built-in
LED Indicators	Front : Security, GPS, REC, Wi-Fi LED / Rear : Status LED
G-Sensor	3-Axis Acceleration Sensor, +2g / -2g
Input Power	DC 12V, 0.5A / DC 24V, 0.3A / DC Plug(Φ3.5 X 1.1) / Wire : (B)GND, (Y)BATT, (R)ACC
Power Consumption	Max. 4.8W (If all the options are turned on, the things such as GPS and LCD)
Etc.	Battery Drain prevention & Securely strong guarantee

General Specifications

Item	Description
Operating Temp.	-20°C ~ 70°C (-4°F ~ 158°F)
High Temp. Cut-off	Approximate 70°C (158°F)
Software	IOS & Android compatible mobile app Window & Mac compatible PC viewer
ADAS	LDWS (Lane Departure Warning System), FVSA (Front Vehicle Start Alarm)
Patented Tech.	"Three Format Free Technology" (Eliminating the need for periodical manual format)

Using Wi-Fi Application

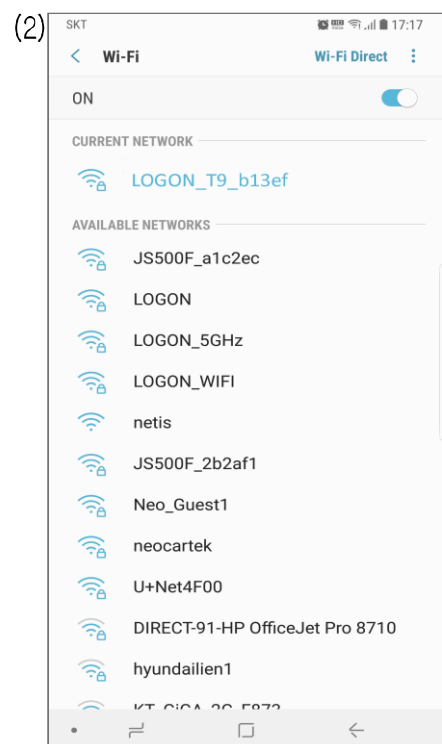
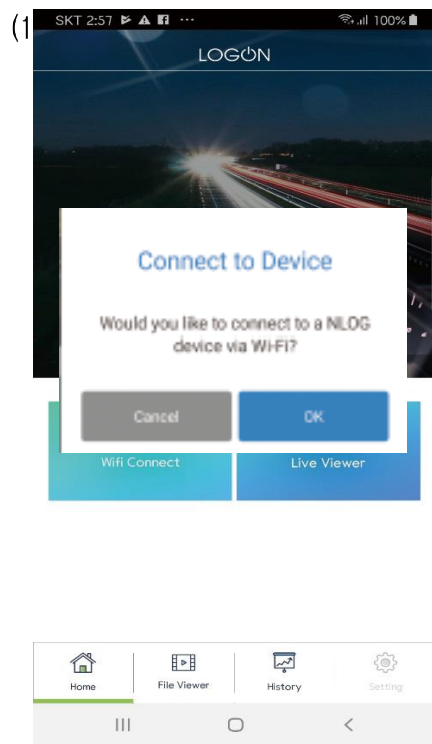
1. Wi-Fi application download and installation

Search "NLOG" on the App Store (iPhone), Play Store (Android) then install.

2. Wi-Fi Application Registration

Press the Wi-Fi button on the NLOG when it is on.

Then connect to LOGON_T9_XXXXXX on the application.



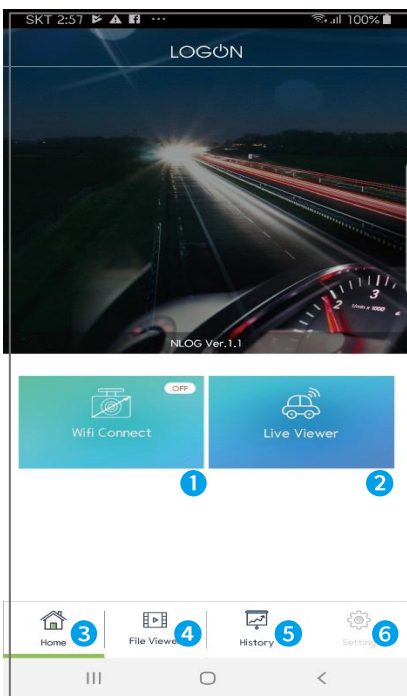
(1) Touch "OK" on the pop-up message to go to the setting when the Wi-Fi is not connected.

(2) Select the Wi-Fi that starts with "LOGON T9" on the Wi-Fi list then go back to the application.

⚠ The initial Wi-Fi password is 12345678.

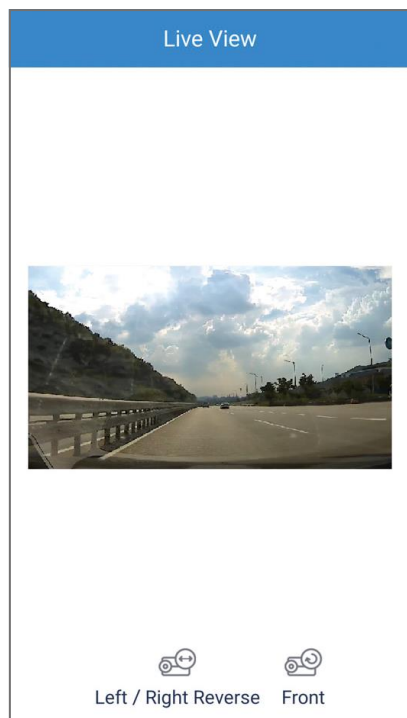
Connecting Wi-Fi is only possible when the T9 is On. If you can not find the device on the Wi-Fi List, please refresh the list or press the Wi-Fi button on the T9.

3. Wi-Fi Application Start-up Screen



①	Wi-Fi status and the name of the connected Wi-Fi.
②	View the front / rear live stream.
③	Return to the Home screen. It will continue recording if it was paused.
④	Find the recording files in different folders.
⑤	Find the trip data and travel route by dates.
⑥	Allows users to get unit's settings switched

4. View the Live Stream (Live Viewer)



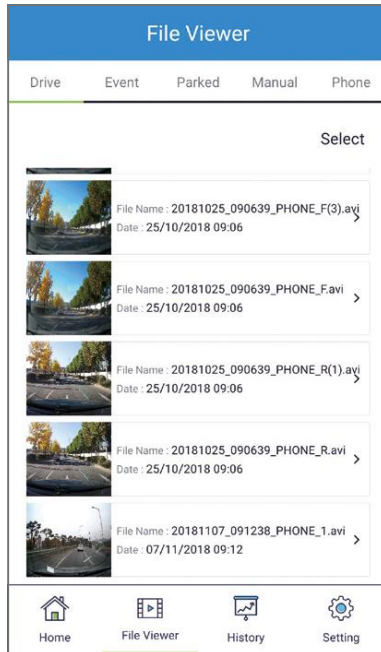
It allows you directly view unit's live video streaming in real time.

Horizontal view is available with front / rear choices and reversing left / right.

⚠ Pls do note that sharing live video streaming via SNS feature is only workable for the IOS-based Mobile app.

5. View the Recordings (File Viewer)

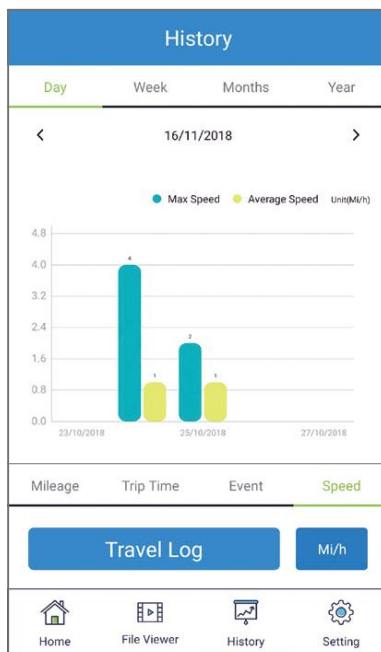
The recording files in the T9 unit can be viewed through the file viewer. Each folder support the thumbnail view with front/rear options.



Each folder categories are such as followings

Drive	Drive recordings are saved. Recorded videos are saved in 1 minute segment with an auto-looping mechanism.
Event	Event-triggered videos are saved in 30 seconds segment. (The video data 15 seconds prior to and after will be automatically stored.)
Parked	Park recordings are saved. Max 30 seconds of recording files including motion / impact event recordings are saved.
Manual	Manual recordings are saved. Max 30 seconds of manual recordings are saved.
Phone	Recordings saved in the smart phone are saved.

6. Trip data (History)

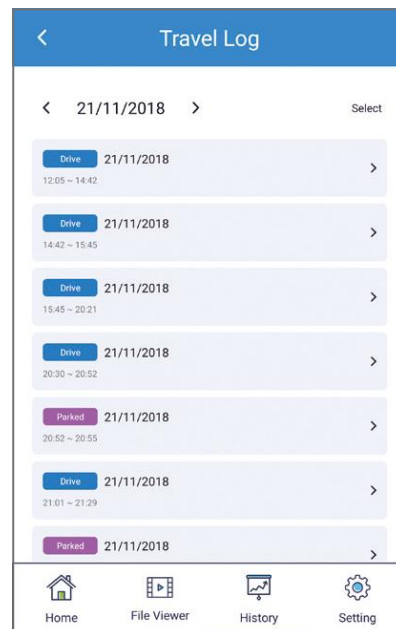
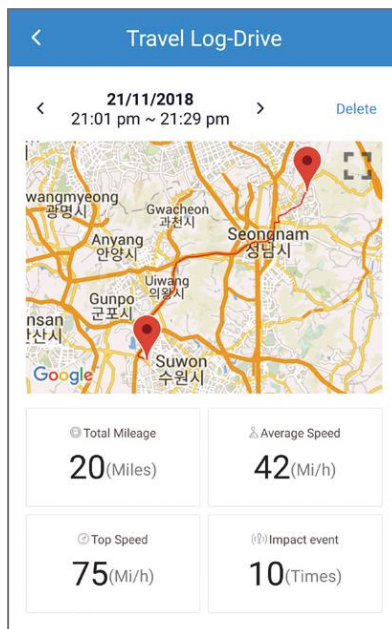


The trip data on different periods are schematized. The mileage, time, speed, the number of event recordings can be found here.

7. Travel Log & Locate Vehicle

Your Itineraries can be safely stored in the History Menu so that you can access all your previous car rides.

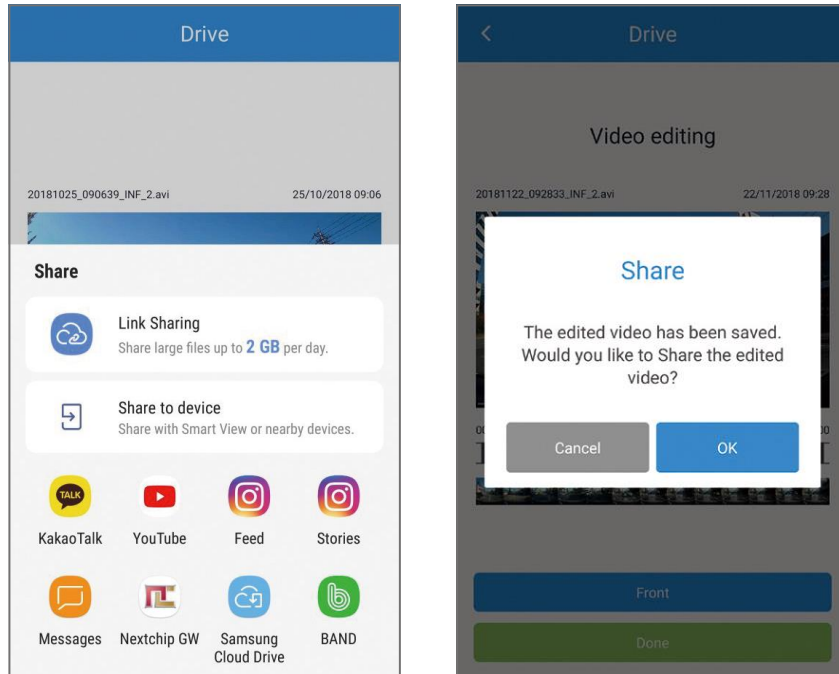
Plus, Travel-log drive will help drivers or fleet managers to find a vehicle's current Location using the T9 mobile app. Captured by the T9' s external GPS antenna, the vehicle' s location, speed, and direction of travel is shown in the mobile app on a Google maps display.



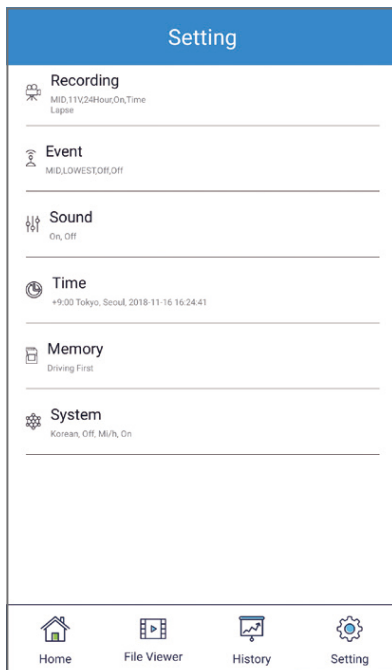
8. Sharing Video through SNS

You can share your dashcam footage to Multiple SNS (Facebook, Line, Whatsapp, ETC) straight from your Wi-Fi connected T9 unit with the NLOGO app.

⚠ Pls do note that the feature mentioned above is only workable for the IOS mobile app.



9. Configuration (Setting)



The dashcam settings can be changed. Setting change in this unit may cause rebooting the T9 system.

Each categories are such as followings

Recording	Settings for image quality, Power saver, parking mode time.
Event	Settings for impact and motion events sensitivity while parking.
Sound	Settings for voice recording options and speaker volume.
Time	Settings for standard time and the current time.
Memory	Settings for memory allocation / Micro SD card Format.
System	Settings for system / Reboot.

Using PC Viewer

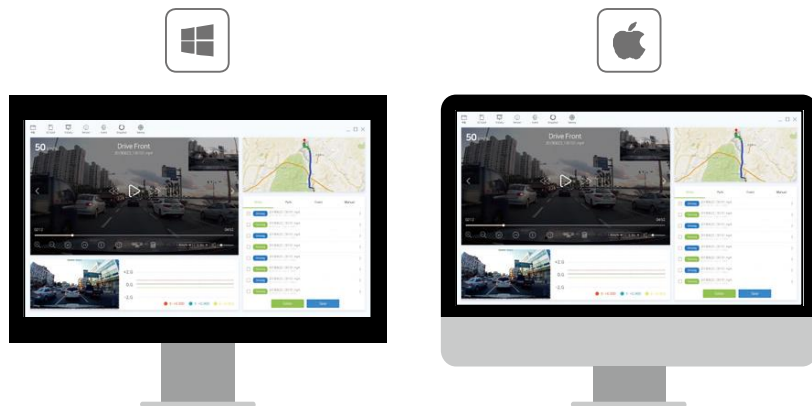
1. Download PC Viewer

Open the Internet browser then download the PC Viewer on the following link in below.

<http://www.Log-On.co.kr/download>

2. PC Viewer Compatibility

The PC viewer is compatible for both Windows and Mac OS computers.



3. Start PC Viewer

Open the installed LOGON Viewer on the desktop.

Before opening the viewer, make sure the Micro SD card is inserted.

