



Package Components ②

Due to improvement in better quality and performance of the product, the real components are subject to change without notice.

Bundle



Option



External Appearance ③

External Appearance



Description

- Camera lens**
Record the front view of vehicle.
- Security LED**
Shows the operating status.
- SD card slot**
Micro SD card slot.
- Power cable**
Connect a power cable. Use bundled power cable.
- Rear camera**
Connect rear view camera.
- GPS**
Connect external GPS cable.
- Speaker**
Vocal guidance and audio output.
- Button**
To turn on and off voice recording, and to format SD card.
- Wi-Fi LED**
LED turns on when Wi-Fi connected.
- GPS LED**
LED turns on when GPS works.
- Status LED**
LED turns on if it works normally.
- MIC**
Record voice and sound.

Installing Instruction ④

Installing Instruction



Insert the SD card before using the device. (Micro SD card is already inserted in the device)

Keep mount holder securely locked in the main unit.

Mount holder have cable holder to arrange cables neatly.

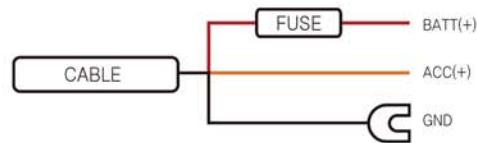
In order to avoid affecting driver's sight, it's better to choose a space in the back of room mirror, than fix the mount holder into it securely by enclosed double-sided tape. Once you attach it, it is hard to detach it. So be careful when you attach it.

When you attach GPS, GPS letter side should be skyward. We recommend to attach it on dashboard.

Fix the rear camera on the rear window. Connect the rear camera cable into the rear camera and the main camera.

Power Cable Hardwiring ⑤

Power Cable Hardwiring



Use the hardwire power cable.

BATT(+) (red color)
Connect the red wire cable to permanent power fuse box. (Ex.: emergency lamp, dome light, tail light etc.)

ACC(+) (yellow color)
Connect the yellow cable to the fuse that gets power through the ignition. (Ex.: cigarette lighter, audio)

GND (black color)
Connect the black cable to the vehicle chassis or vehicle bolts.



PC Viewer Use



- You can play the video recorded in this device in PC.
- Install bundled PC viewer to check the video.

File Saving Guide ⑥

Open TAT file

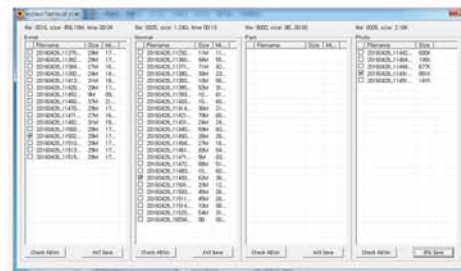
This DVR saves files by TAT function which do not require SD card format. Files saved by TAT are not shown in public player, but shown in only bundled PC viewer or browser. Refer to below TAT browser manual.

How to change and save TAT file in PC

- Execute AVI file converter.exe stored in bundled SD card.

Name	Date	Type	Size
AVI File Converter.exe	2016-03-25	exe Program	166KB
ESVAVIMuxer.dll	2016-03-24	exe Program	88KB
TATLib.dll	2016-03-24	exe Program	316KB
VipLib.dll	2016-03-24	exe Program	316KB

- Double click the file. Or after selecting a file click AVI button in bottom then the file will be converted to AVI file.



File converting

File convert completed



- Can play AVI files in public PC video player.

APP Installing ⑦

Android APP Installing

- Go to "Play Store" APP in the smart phone.
- Go to search in Play Store.
- Type and search "WDVR"
- Choose "WDVR" in the searched list.
- Install the DVR APP by clicking "Install" button.
- If install is successful, you can see "WDVR" icon in the phone main screen.

iOS APP Installing

- Go to "APP Store" in the smartphone.
- Go to search in APP Store.
- Type and search "WDVR"
- Click download.
- Download and install the WDVR APP.
- If install is successful, you can see "WDVR" icon in the phone main screen.

Main Functions ⑧

Main Screen



Real time video

- To check real time video.
- To On/Off voice recording.
- To reverse front / rear video.

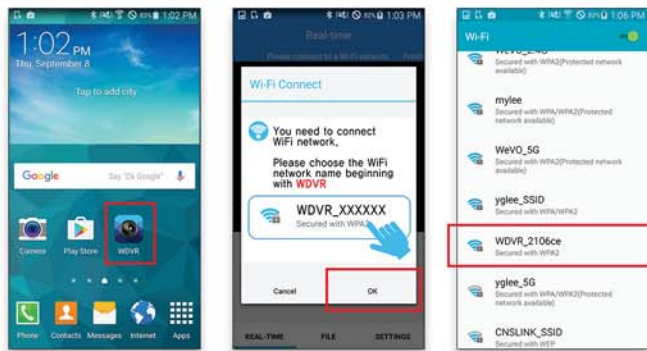
Video file list

- To check recorded video files.
- To download video files to your smartphone.
- To play the downloaded video files.

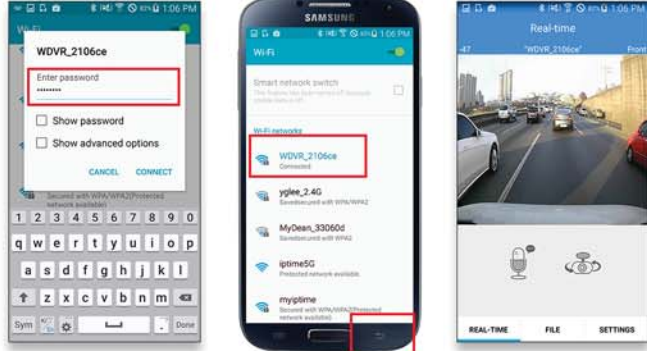
Settings

- To configure various settings, or change WiFi password.

WiFi Connection with DVR (Android) ⑨



- 1 Click "WDVR" icon in the main screen.
- 2 Click "OK" when WiFi connection screen pops up.
- 3 Choose "WDVR_XXXXXX" in the searched list.

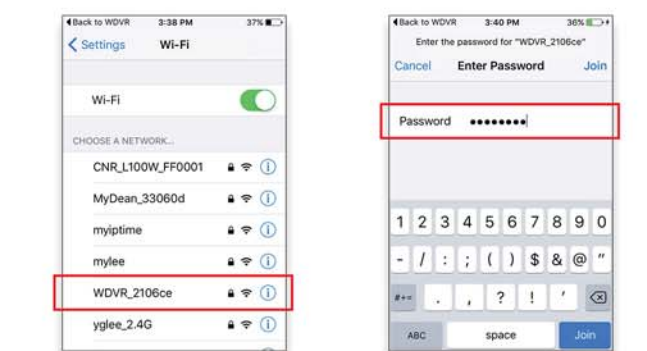


- 4 Input password and click connection button. (initial password is 12345678)
- 5 If WiFi is connected, click the backward button of smartphone.
- 6 Real time video screen will be displayed.

WiFi Connection with DVR (iOS) ⑩



- 1 If WiFi setting screen is displayed, click "OK"
- 2 If WiFi is off, turn on the WiFi

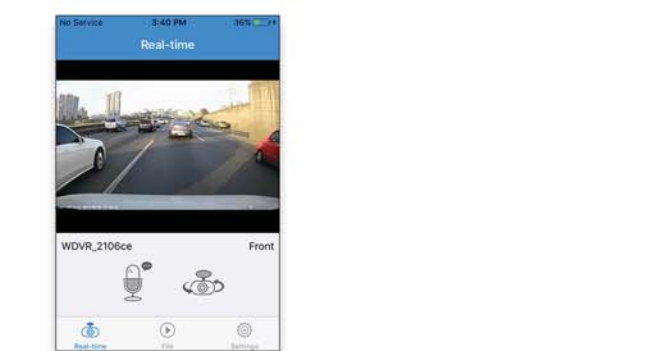


- 3 Choose "WDVR_XXXXXX" in the searched list.
- 4 Input password and click connection button.

WiFi Connection with DVR (iOS) ⑪

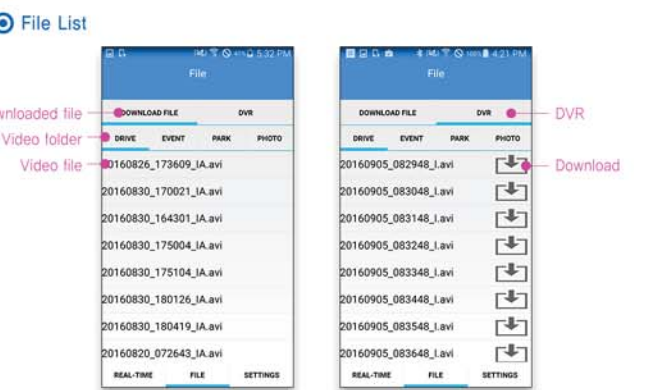


- 5 If WiFi is connected, you can see "V" mark on the top.
- 6 Click "Back to WDVR" on the top line.



- 7 If WiFi is connected with DVR, real time video will be displayed.

Recorded File List ⑫



Recorded File List (downloaded file)

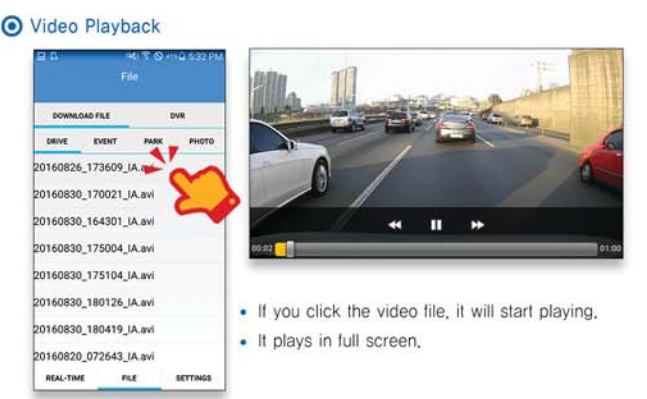
- It displays downloaded file list to smartphone.
- Folders have driving/event/parking/photo folders.
- Click the file in each folder to play.
- File storing folder : Internal memory / WDVR /

Recorded File List (DVR)

- It displays files stored in DVR.
- Folders have driving/event/parking/photo folders.
- Click the file in each folder to play.
- If you click download icon next to the file, the file will be downloaded in your smartphone.
- Front and rear video files are downloaded separately.



Video Playback ⑬

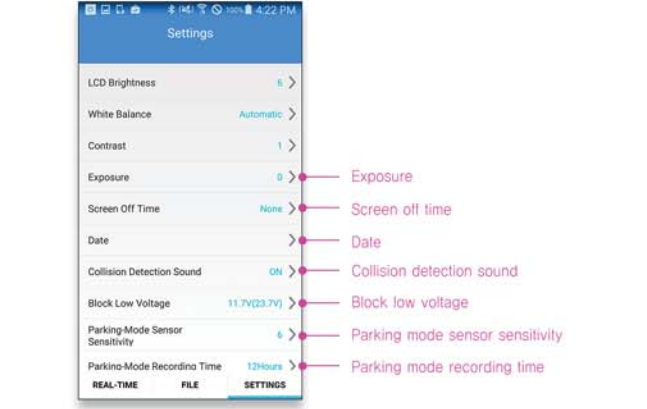
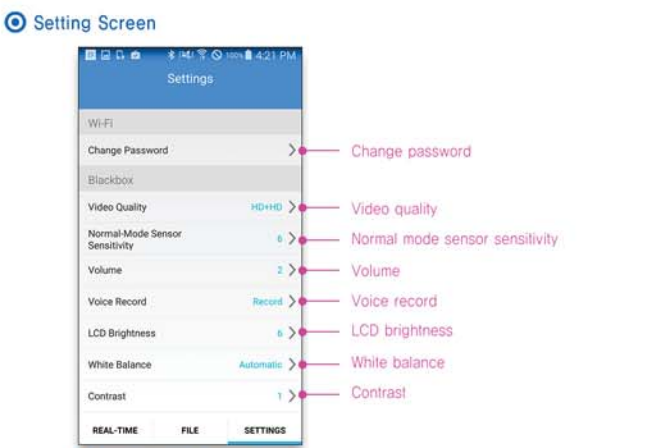


Video Deletion

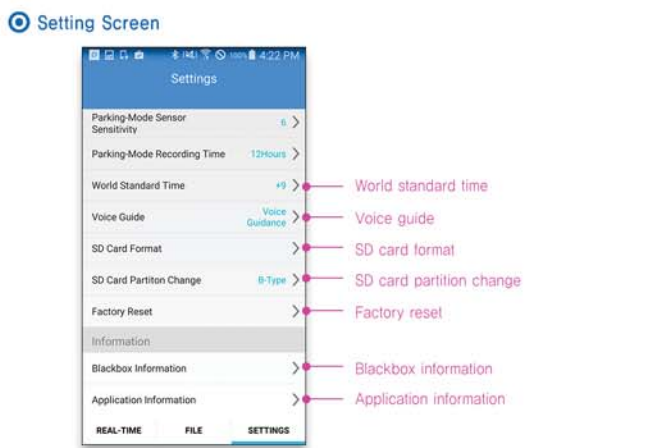


- Swipe left the file to delete it, a file deletion message will pop up.
- If you click "deletion", it will be deleted.

Settings ⑭



Settings ⑮



- **Change password**
Password is for preventing somebody to see the video. You need to input password to play the video files.
- **Video resolution**
You can select Full HD+HD or HD+HD.
- **Normal mode sensor sensitivity**
Setting impact sensor sensitivity in driving mode. Smaller number means higher sensitivity.
- **Voice record**
Recording voice together with video. Voice recording can be set in the display of the main camera.

Settings ⑯

- **Date**
If your DVR have the external GPS connected, time is set automatically. If there is not GPS you need to set date and time manually.
- **Block low voltage**
If car battery power voltage drops to a certain level, in order to prevent battery discharge, DVR power is off automatically.
- **Parking mode recording time**
In parking mode, if it keeps recording, car battery could be discharged. In order to prevent battery discharge, you can set parking recording time.
- **World standard time**
Set up your local time. For example, UK time is "0". Korea time is "+9"
- **SD card partition change**
SD card stores each type recording files in each different memory space. You can choose A/B/C memory size type.